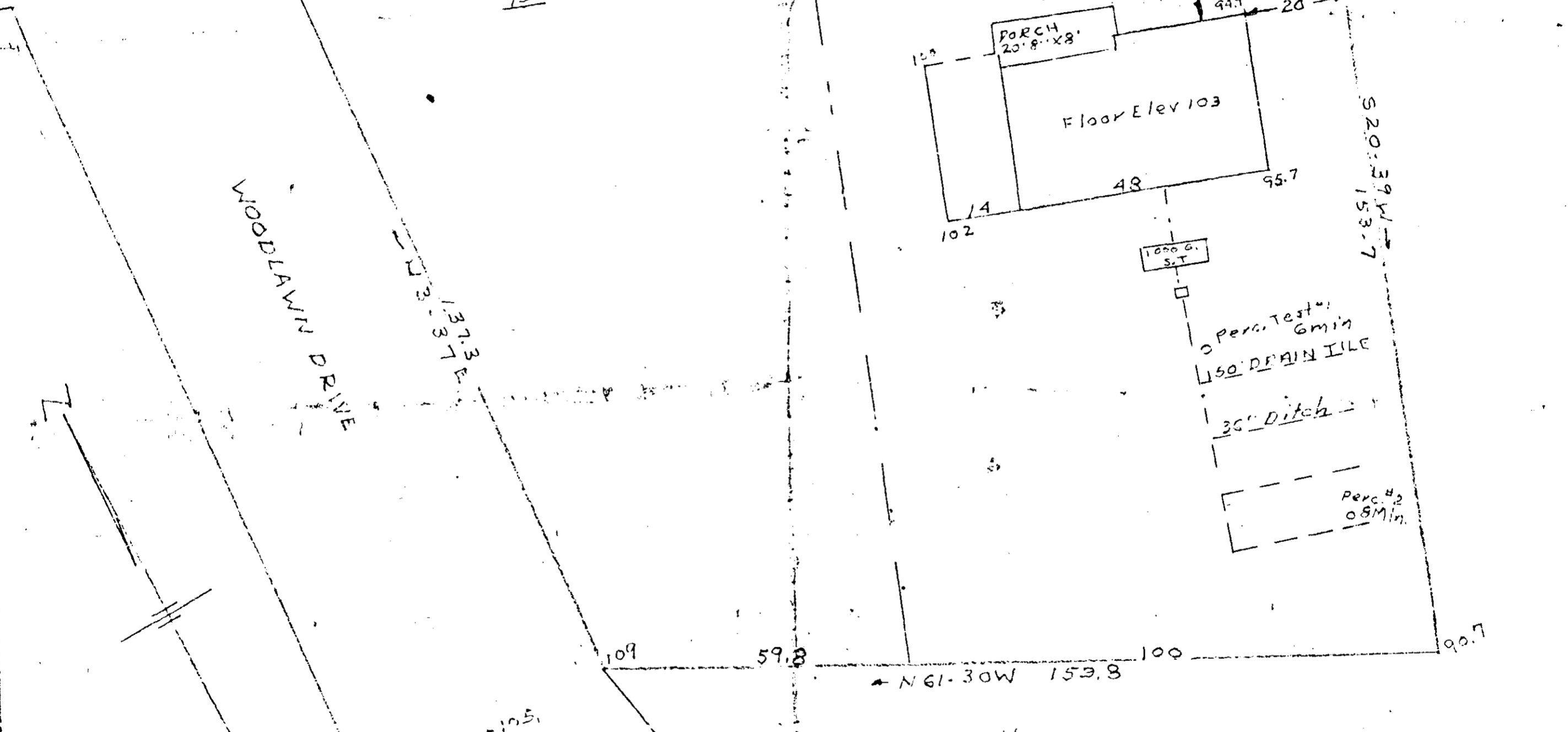


GREENVILLE CO. S.C.
 FILED
 JUN 7 1967
 M.P. 2 14 PM 1967
 53



JUN 7 1967
 SOUTH CAROLINA
 REGISTERED
 No. 276
 PROFESSIONAL
 LAND SURVEYOR
 J. MAC RICHARDSON

This is to certify that on the 31st day of MAY 1967, I surveyed the property shown on this plat, being Lot 19 & 20 - WHISPERING PINES WINDS, in accordance with the survey of the same made by me on the 10th day of MAY 1967, and that the same is in accordance with the original survey of the same made by me on the 10th day of MAY 1967, and that the same is in accordance with the original survey of the same made by me on the 10th day of MAY 1967, and that the same is in accordance with the original survey of the same made by me on the 10th day of MAY 1967.

J. Mac Richardson
 J. Mac Richardson, L.L.S. 573

LOTS 19 & 20 WHISPERING PINES
 NORTH OF PIEDMONT
 GREENVILLE COUNTY SC.
 SCALE: 1" = 20'
 JAN. 12, 1967
 I certify that I made percolation tests on this lot in accordance with F.H.A. M.B.S. #4 that the rates were as shown hereon
 J. Mac Richardson L.L.S. 573

100
 QQQ-169

29929

#29929 Filed This 7 day of June 1967
 And Recorded in Vol. 94 Page 169 of 214 M
C. J. Starnes
 Register Mesne Conveyance Greenville County, S. C.